

MONTHLY MEMBERSHIP PROGRESS REPORT

LOCATION LOUISIANA

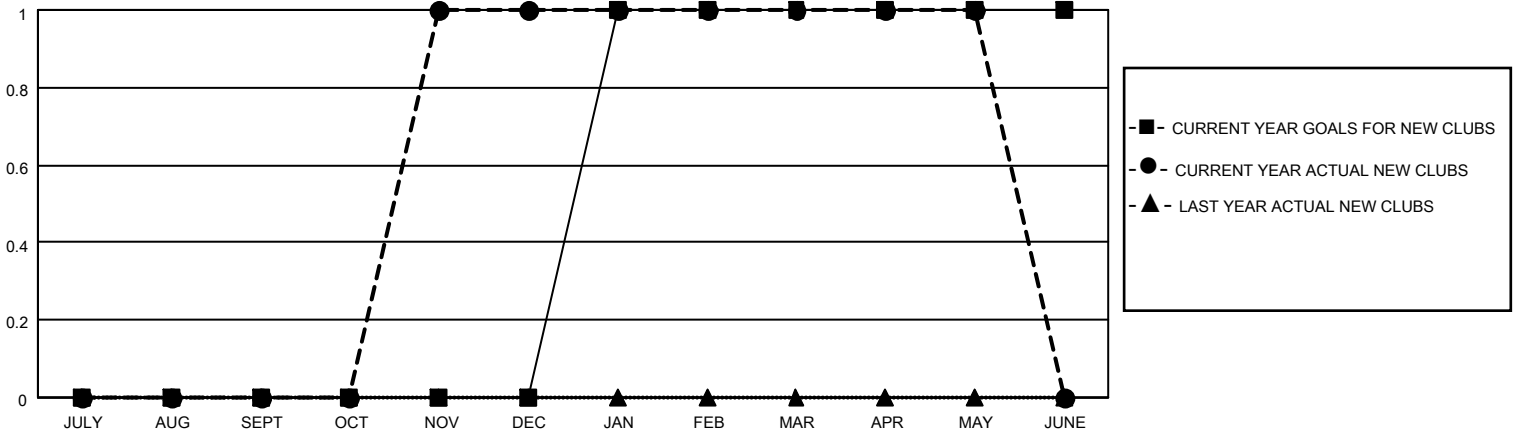
District 8 S

Results as of: 5/31/2021

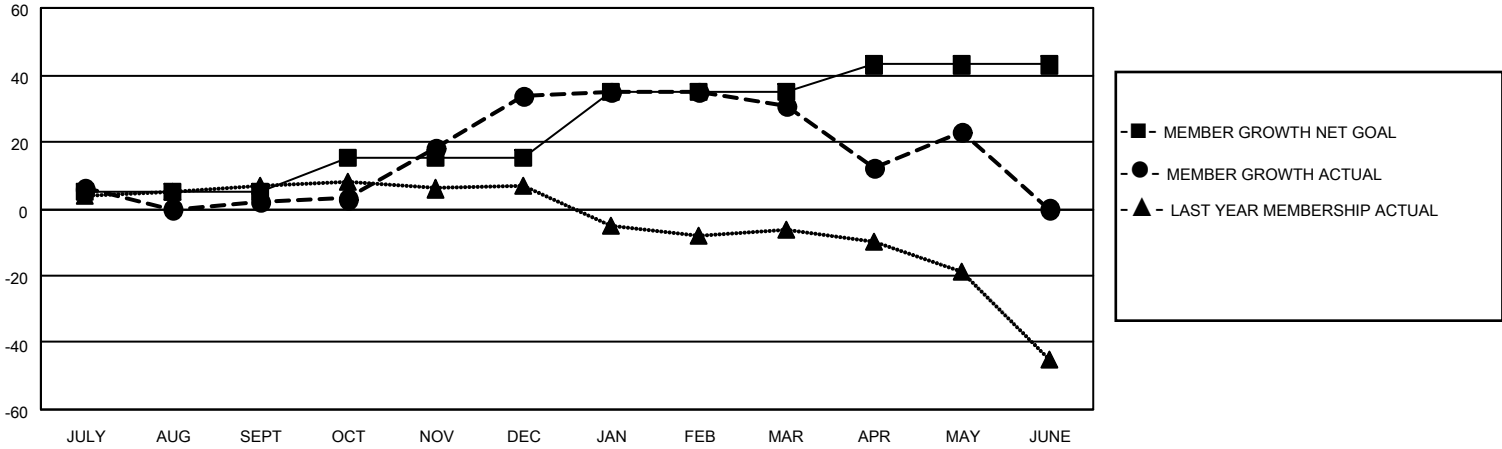
| Clubs | | | |
|-----------------------|---------------|-----------|---------------|
| RESULTS FOR 2020-2021 | | | |
| QUARTER | NEW CLUB GOAL | NEW CLUBS | DROPPED CLUBS |
| JULY/AUG/SEPT | 0 | 0 | 0 |
| OCT/NOV/DEC | 0 | 1 | 0 |
| JAN/FEB/MAR | 1 | 0 | 0 |
| APR/MAY/JUNE | 0 | 0 | 0 |

| Members | | | |
|-----------------------|------------------------|----------------------|---|
| RESULTS FOR 2020-2021 | | | |
| QUARTER | MEMBER GROWTH NET GOAL | MEMBER GROWTH ACTUAL | DROPPED MEMBERS ACTUAL (including transfers) |
| JULY/AUG/SEPT | 5 | 14 | 8 |
| OCT/NOV/DEC | 10 | 46 | 14 |
| JAN/FEB/MAR | 20 | 10 | 13 |
| APR/MAY/JUNE | 8 | 16 | 24 |

GOALS AND ACTUAL NEW CLUBS CUMULATIVE



GOALS AND ACTUAL MEMBERS CUMULATIVE



| | | |
|--------------------------------|---|--|
| DROPPED CLUBS: 0 | 19 CLUBS OF 36 ADDED 1 OR MORE NEW MEMBERS | GENDER DISTRIBUTION |
| DROPPED MEMBERS | CLICK HERE FOR CUMULATIVE MEMBERSHIP DATA | MALE 532 (55.19%) |
| DECEASED 16 | | FEMALE 432 (44.81%) |
| CLUB CANCELLED 0 | | TOTAL FAMILY UNIT MEMBERS 248 |
| OTHER 43 | | FAMILY MEMBERS PAYING HALF DUES 129 |
| TOTAL 59 | | |